

# POLISHED STONE PAVERS



Concrete Pavers • Stone Pavers • Tiles • Garden Walls & Edging  
Retaining Walls • Concrete Sleepers • Concrete Blocks • Wall Cladding

# POLISHED STONE PAVERS



**BEST PRICE** >>>  
promise

## FEATURES

- Honed finish
- Slip resistant
- Hardwearing and durable
- Free samples available

## SUITABLE FOR

- Pools and pool surrounds
- Entertaining areas
- Courtyards and patios
- Garden paths
- Stepping stones



Specifications	Size	No. per m <sup>2</sup>	Weight per m <sup>2</sup>	m <sup>2</sup> per pallet	Slip rating
Pavers	600 x 300 x 40mm	5.55	96kg	17.28	P4
Aris Edge	600 x 300 x 40mm	N/A	17.28kg each	57.6 LM	P4
Drop Face 80mm	600 x 300 x 40mm	N/A	21kg each	43.2 LM	P4

## COLOUR RANGE\*

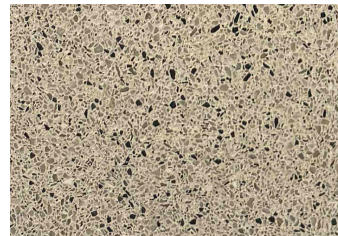
Limestone



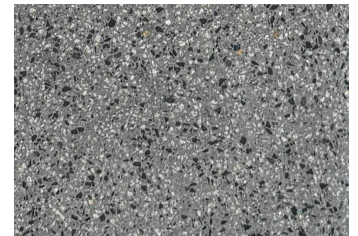
Grey



Pearl



Charcoal



\*Due to natural resources used in production there are slight colour variations between batches. Pool copings can differ in appearance to the body tile and mixing 2 different sizes can end up with slight variations. Colour swatches are a guide only. Samples you receive may also be slightly different to what is received. Pavers should be laid with approximately 2-3mm gap due to thickness variation. Must be laid on soft sand base. This product has a V2 Variance rating.



[www.australianpaving.com.au](http://www.australianpaving.com.au)

  [australianpavingcentre](https://www.instagram.com/australianpavingcentre)

