

# COASTAL STONE 450 X 450



Concrete Pavers • Stone Pavers • Tiles • Garden Walls & Edging  
Retaining Walls • Concrete Sleepers • Concrete Blocks • Wall Cladding



# COASTAL STONE 450 X 450



**BEST PRICE** >>>  
*promise* \*Terms and conditions apply.

## FEATURES

- Slip resistant
- Smooth finish
- Durable and hardwearing
- Free samples available

## SUITABLE FOR

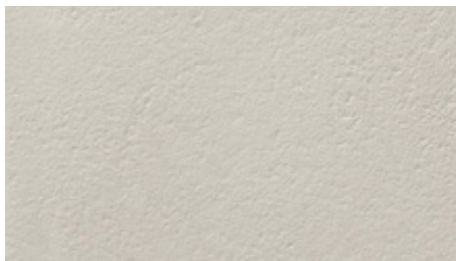
- Entertaining areas
- Pool areas
- Patios and alfresco
- Courtyards
- Garden paths and walkways
- Stepping stones



Specifications	Size	No. per m <sup>2</sup>	Weight per m <sup>2</sup>	m <sup>2</sup> per pallet
Coastal Stone	450 x 450 x 40mm	4.94	94.4kg	12.15
Bullnose	450 x 450 x 40mm	N/A	19.1kg each	27.02 LM

## COLOUR RANGE\*

Linen



Charcoal



Steel



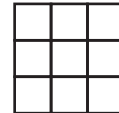
\*Due to natural resources used in production there are slight colour variations between batches. Pool copings can differ in appearance to the body tile and mixing 2 different sizes can end up with slight variations. Colour swatches are a guide only. Samples you receive may also be slightly different to what is received. Coastal Stone pavers should be laid with approximately 2-3mm gap due to thickness variation. Must be laid on soft sand base. This product has a V2 Variance rating.



[www.australianpaving.com.au](http://www.australianpaving.com.au)

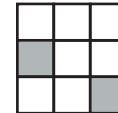
  **australianpavingcentre**

UNIFORM  
APPEARANCE



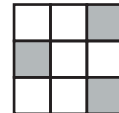
**V1**

SLIGHT  
APPEARANCE



**V2**

MODERATE  
APPEARANCE



**V3**

SUBSTANTIAL  
APPEARANCE



**V4**