



Concrete Pavers • Stone Pavers • Tiles • Garden Walls & Edging  
Retaining Walls • Concrete Sleepers • Concrete Blocks • Wall Cladding



# EURO® STONE



**BEST PRICE** >>>  
*promise* Terms and conditions apply.

## FEATURES

- Exposed aggregate surface
- Slip resistant
- Easy to install
- Hardwearing
- Free samples available

## SUITABLE FOR

- Pool surrounds
- Entertaining areas and courtyards
- Patios and garden pavers
- Driveway safe - When adhered onto a suitably prepared concrete base



Specifications	Size	No. per m <sup>2</sup>	Weight per m <sup>2</sup>	m <sup>2</sup> per pallet OR unit
Euro Stone	400 x 400 x 40mm	6.25	91.38kg	17.28
Euro Stone	600 x 400 x 40mm*	4.17	84.86kg	17.28
Sharknose	400 x 400 x 40mm	N/A	14.62kg each	108 units

## COLOUR RANGE\*

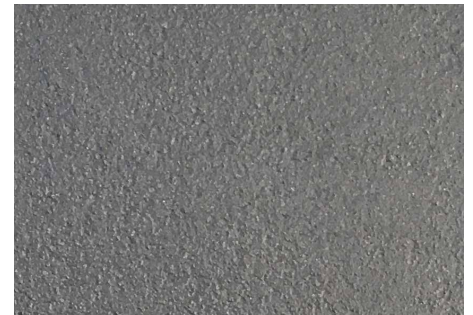
Riverina



Zurich



Prague



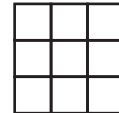
\*Colours are an indication only. Always sight physical product colour samples before purchase.



[www.australianpaving.com.au](http://www.australianpaving.com.au)

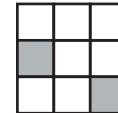
  [australianpavingcentre](https://www.australianpavingcentre.com.au)

UNIFORM APPEARANCE



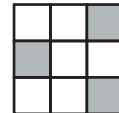
V1

SLIGHT APPEARANCE



V2

MODERATE APPEARANCE



V3

SUBSTANTIAL APPEARANCE



V4